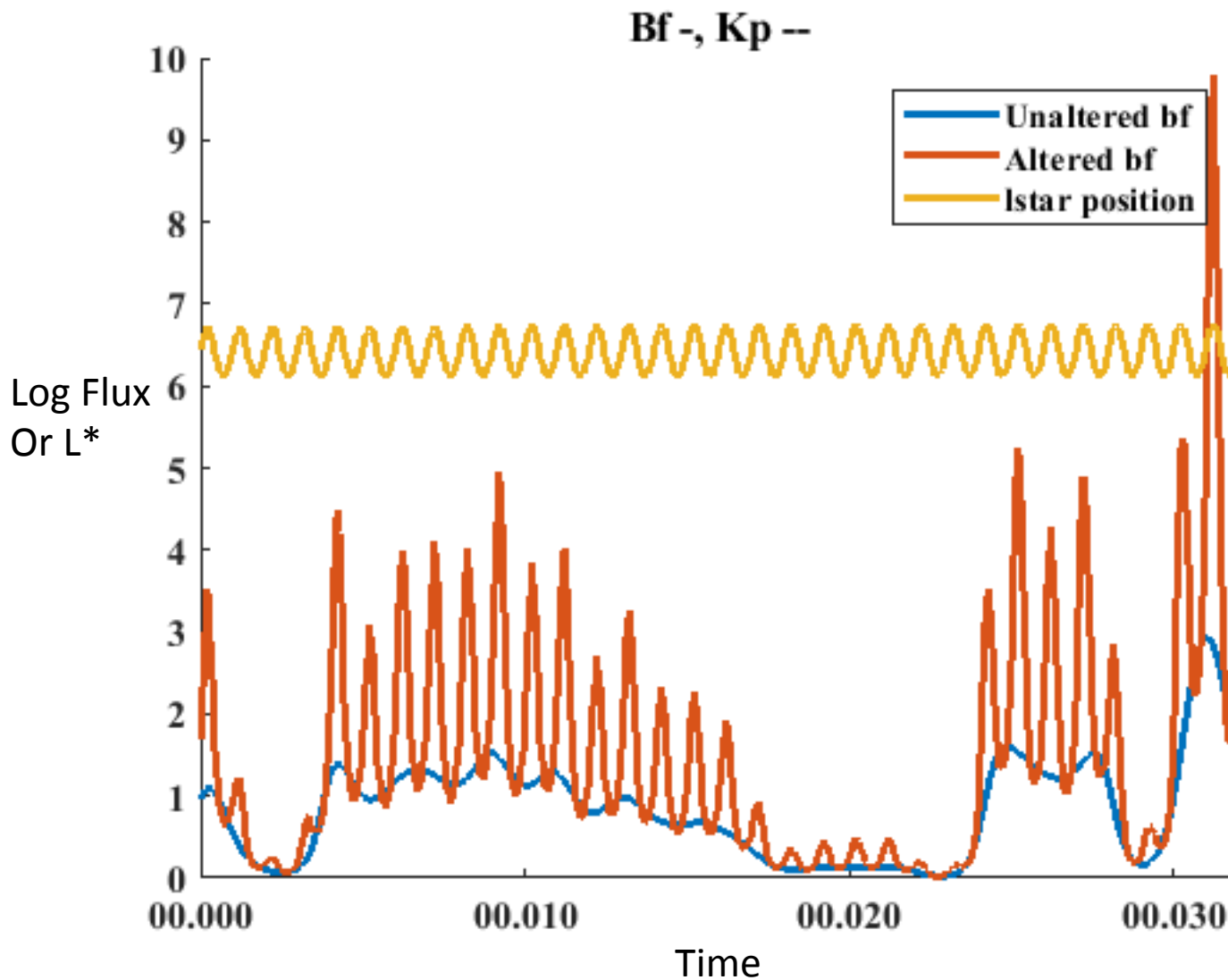


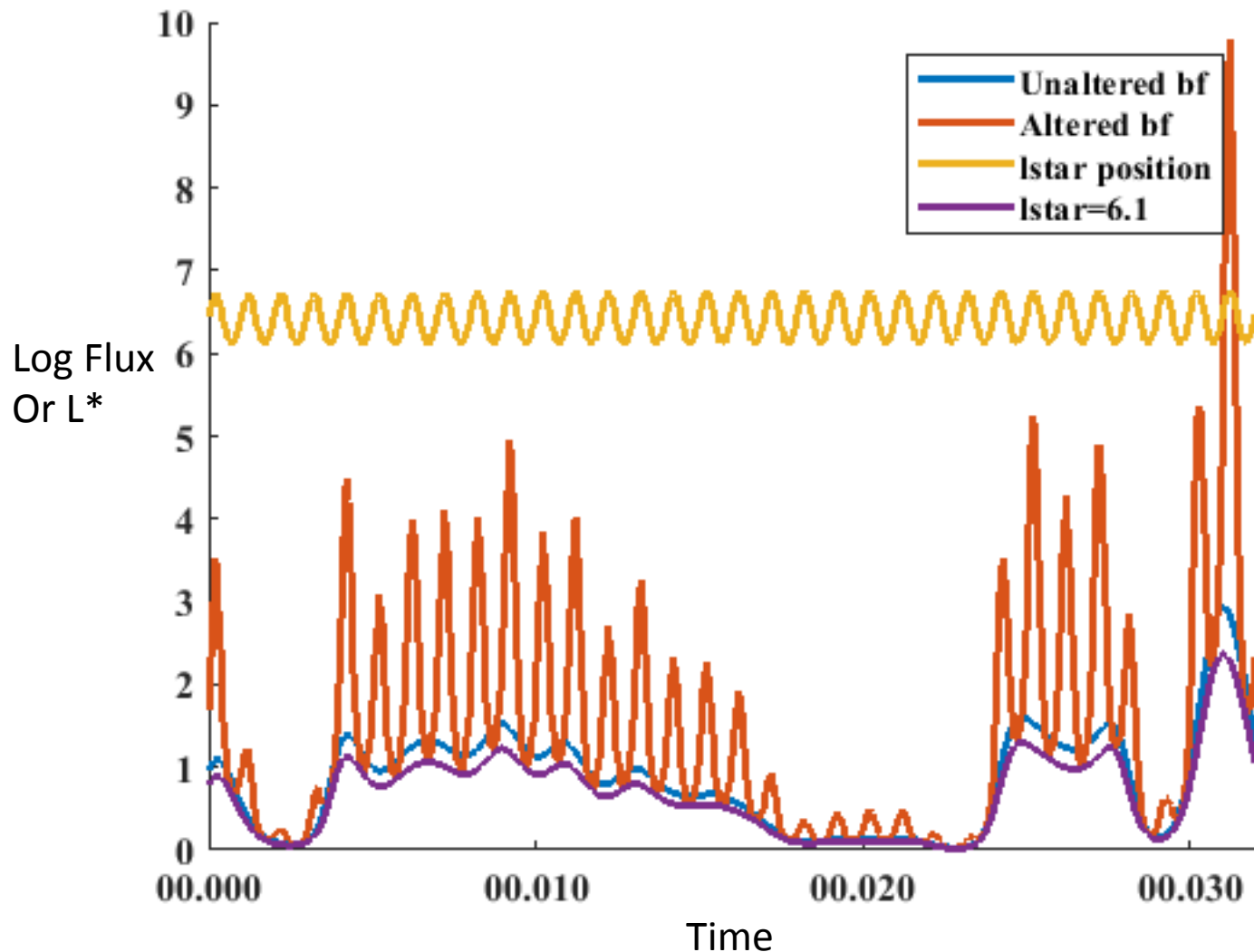


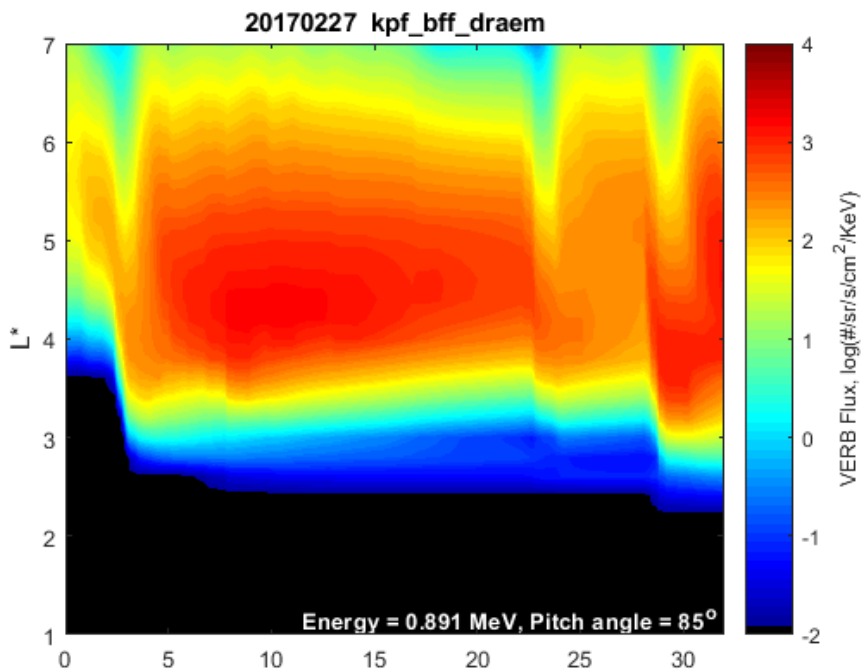
PRediction Of Geospace Radiation Environment and Solar wind parameterS

Task 6.3

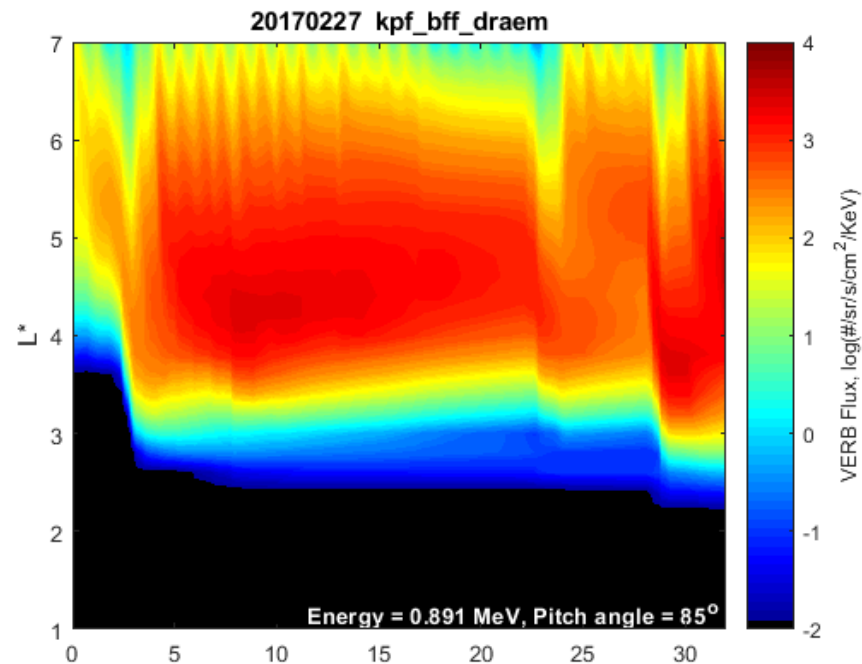
- VERB requires a value for the electron flux at its outer boundary.
- Value may be fixed or variable (from file).
- Task 6.1 has produced models that generate accurate estimates of the electron fluxes at GEO.
- These estimates can be used to produce the outer boundary flux required by VERB.
- However, these values need translating from GEO ($L=6.6$) to $L^*=7$
- Initial model coupling assumed fixed value of L^* for GEO ($L^*=6.2$)
- The value of L^* for GEO is not constant, and can vary with geomagnetic activity
- Task 6.3 investigated effects of introducing a variable L^*



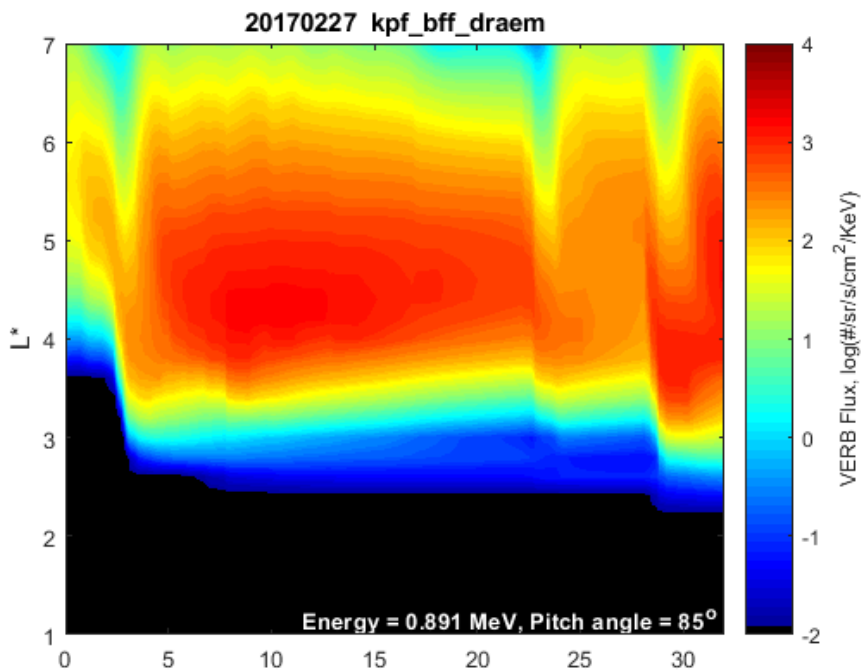




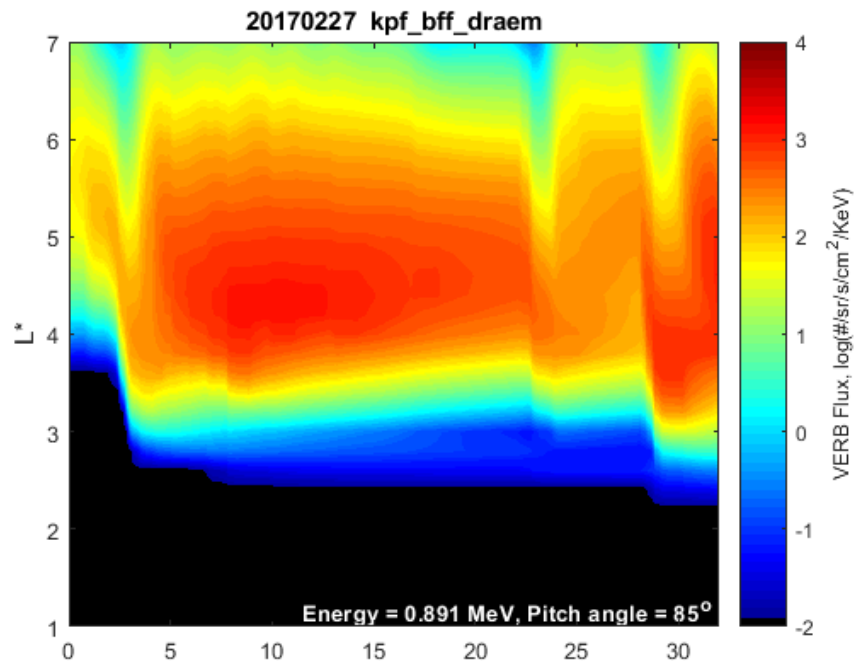
Fixed $L^*=6.2$



Variable L^*



Fixed $L^*=6.2$



Fixed $L^*=6.1$