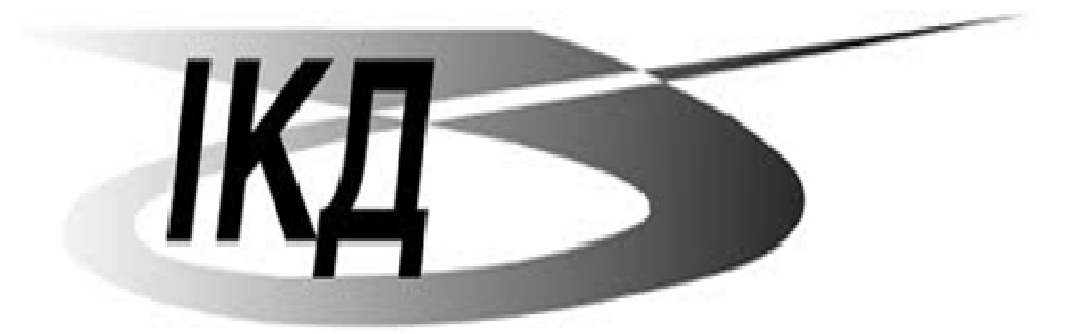


# GEOMAGNETIC INDICES INVESTIGATION (DST, Kp, AE): CORRELATION DIMENSION, LYAPUNOV EXPONENTS, AND PREDICTION

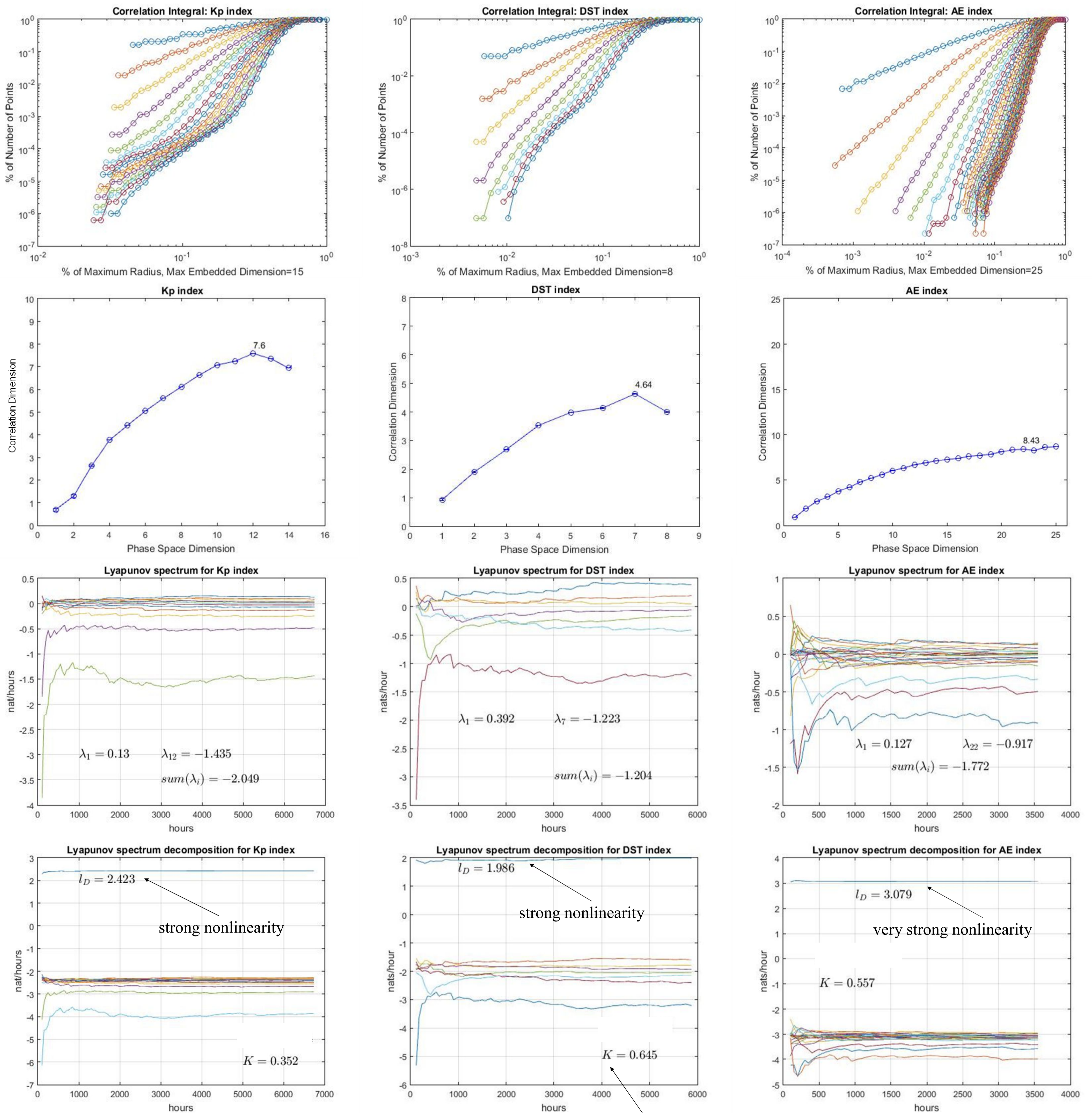


S. Ivanov

Space Research Institute NAS and SSA of Ukraine

Funding from H2020

*smivanov87@gmail.com*



OMNI2 data for: 06.2015 -04.2016.

K - Kolmogorov entropy.

Kp(avg) ~ 20;

DST(avg) ~ -18;

AE(avg) ~ 258 nT.

Prediction:

**Kp** ~ 7 hrs; **DST** ~ 3 hrs; **AE** ~ 7 hrs.